

# 442 SARATOGA AVENUE, BROOKLYN, NY

Southwest Corner of Saratoga Avenue and Park Place



**AS EXCLUSIVE AGENT, WE ARE PLEASED TO OFFER THE FOLLOWING SPACE FOR LEASE:**

**Space:** Ground Floor: 11,215 sq. Ft.

**Possession:** 4Q 2017

**Ceiling Height:** 15 Feet 6 inches to 18 Feet slab to slab

**Asking Rent:** Upon Request

**Frontage:** 100 Feet on Saratoga Avenue  
80 Feet on Park Place

**Comments:**

- Located at the base of a brand new mixed-use development with 135 residential units
- Seeking medical, educational and community oriented tenants
- In close proximity to A, C, L, 2, 3, 5 subway lines
- Building is adjacent to a newly developed .75 acre park featuring neighborhood garden, playgrounds, trail and basketball courts

**Matthew Gorman**

212.251.0626

mgorman@newstreetra.com

**Joshua Gettler**

212.251.0627

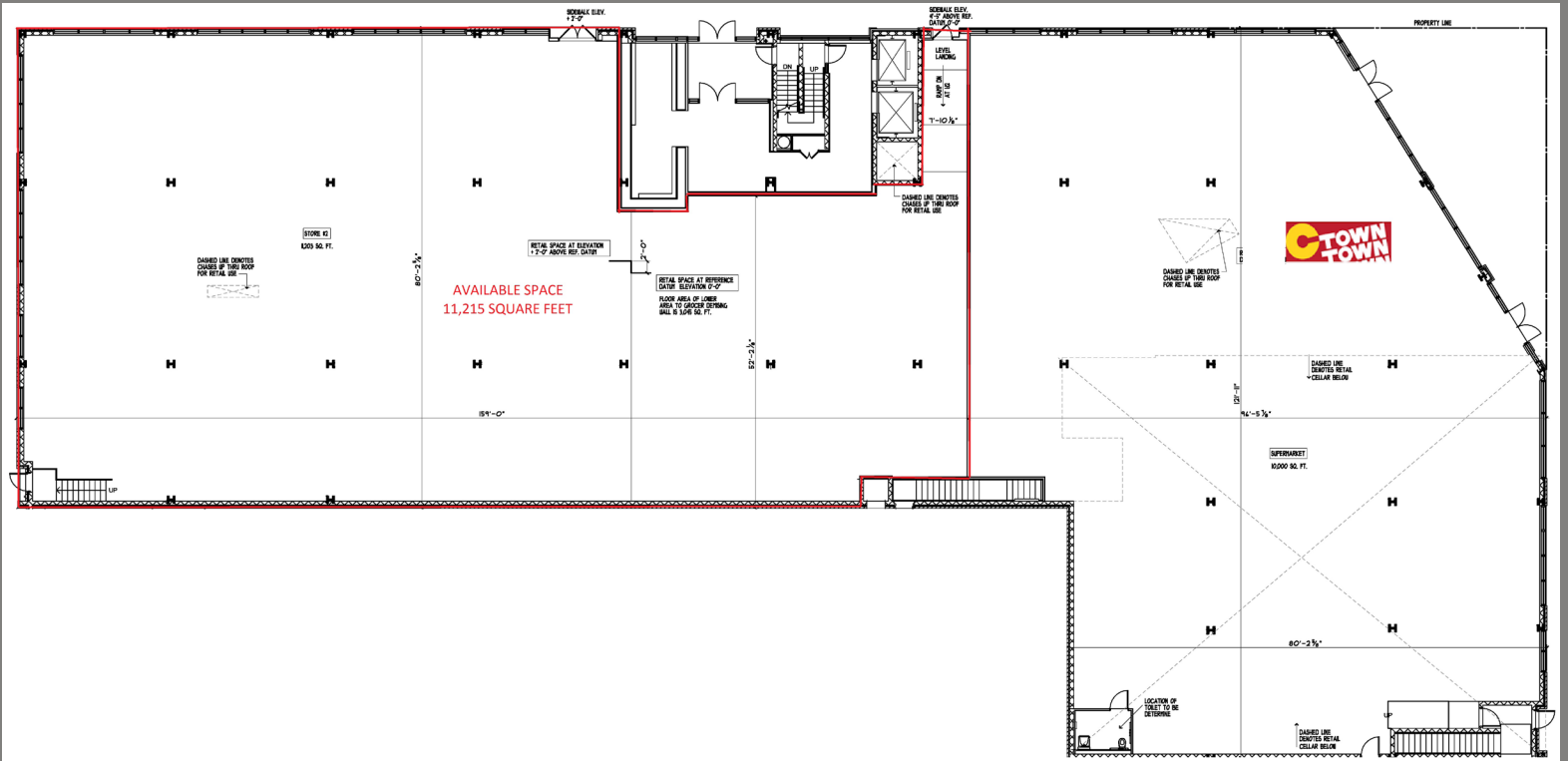
jgettler@newstreetra.com

Exclusive Agent



# 442 SARATOGA AVENUE, BROOKLYN, NY

Southwest Corner of Saratoga Avenue and Park Place



Matthew Gorman  
mgorman@newstreetra.com  
212.251.0626

Joshua Gettler  
jgettler@newstreetra.com  
212.251.0627

Exclusive Agent

**NEW STREET**  
REALTY ADVISORS