

25 ATLANTIC AVENUE, LYNBROOK, NY

WEST SIDE OF ATLANTIC AVENUE BETWEEN MERRICK ROAD AND STAUDERMAN AVENUE



AS EXCLUSIVE AGENT, WE ARE PLEASED TO OFFER THE FOLLOWING PRIME SPACE FOR LEASE:

Size: Ground Floor: 3,288 Sq. Ft. (expandable)

Frontage: 24 Feet on Atlantic Avenue

Ceiling Heights: 10 Feet

Possession: Immediate

Rent: Upon Request

Neighbors: Lynbrook LIRR, HSBC Bank, Carvel, Cold Stone Creamery, Bank of America, Citibank, Rite Aid and Astoria Federal Savings

New Street Realty Advisors, LLC

419 Park Avenue South, Suite 809, New York, NY 10016

Matthew Gorman

212.251.0626

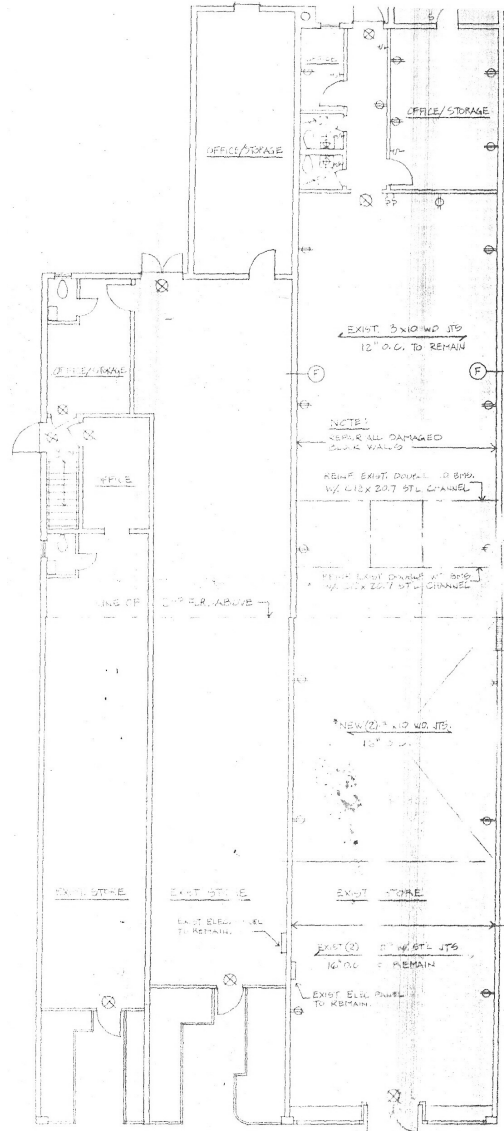
mgorman@newstreetra.com

www.newstreetra.com

**NEW
STREET**
REALTY ADVISORS

25 ATLANTIC AVENUE, LYNBROOK, NY
WEST SIDE OF ATLANTIC AVENUE BETWEEN MERRICK ROAD AND STAUDERMAN AVENUE

GROUND FLOOR



Atlantic Avenue → N

New Street Realty Advisors, LLC

419 Park Avenue South, Suite 809, New York, NY 10016

Matthew Gorman

212.251.0626

mgorman@newstreetra.com

The information is from sources deemed reliable, however, we have not verified its accuracy, and make no representation about it. It is submitted subject to the possibility of errors, omissions, change of price, rental or other conditions, prior sale, lease or financing, or withdrawal without notice.

