

# 1820 MADISON AVENUE, NEW YORK, NY

WEST SIDE OF MADISON AVENUE BETWEEN E 118TH ST AND E 119TH ST



AS EXCLUSIVE AGENT, WE ARE PLEASED TO OFFER THE FOLLOWING PRIME SPACE FOR LEASE:

- Size:** Ground Floor: 5,108 Sq. Ft. (divisible)  
**Frontage:** Unit A: 65 Feet on Madison Avenue  
**Ceiling Height:** 11 Feet  
**Rent:** Upon Request  
**Possession:** Immediate  
**Retail Neighbors:** Madison Avenue Wines, Dunkin Donuts, Subway, CVS, New York Sports Club, and Carver Bank  
**Medical Neighbors:** Institute for Family Health, Doshi Diagnostic, Physical Therapy of Harlem, Harlem Medical Associates, The Helene Fuld College of Nursing, Michroecologies,  
**Transportation:** Steps from the 2, 3, 4, 5, and 6 Subway and M116, M101, M102, M15 and M16 Bus

New Street Realty Advisors, LLC

419 Park Avenue South, Suite 809, New York, NY 10016

Joshua Gettler

212.251.0627

jgettler@newstreetra.com

Matthew Gorman

212.251.0626

mgorman@newstreetra.com

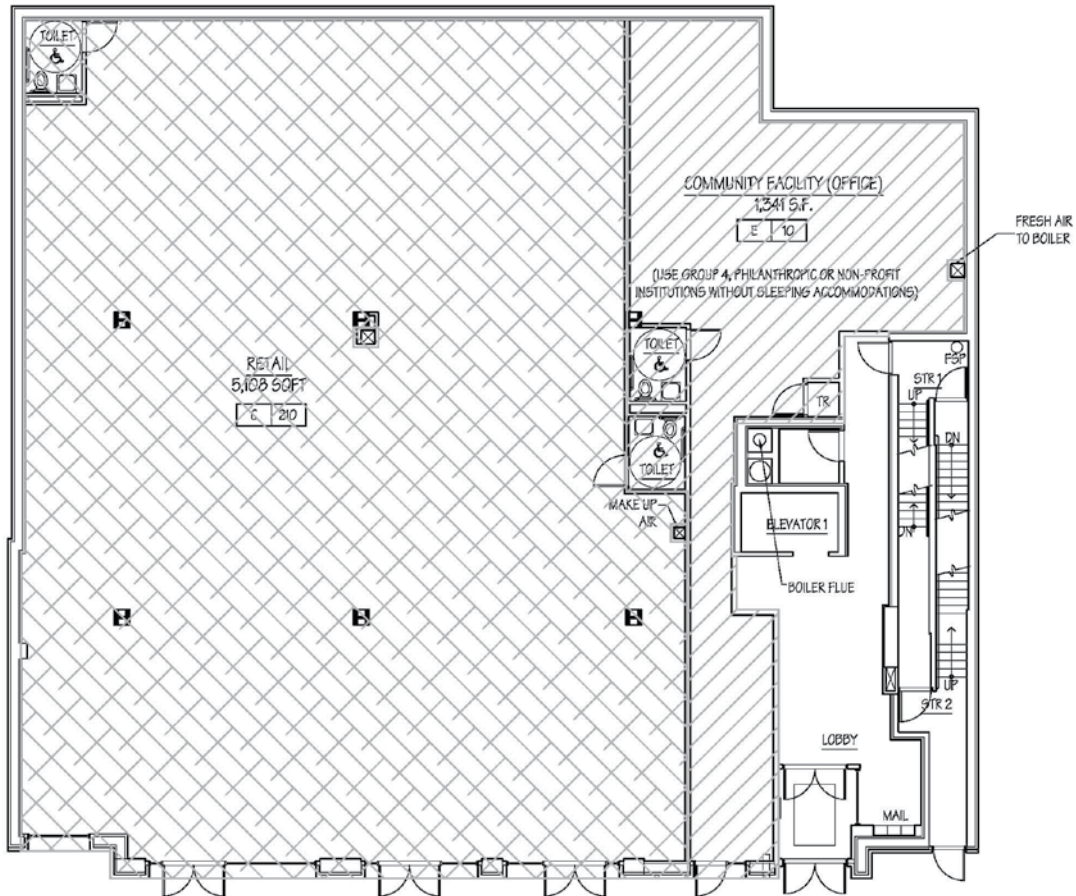
[www.newstreetra.com](http://www.newstreetra.com)

**NEW  
STREET**  
REALTY ADVISORS

1820 MADISON AVENUE, NEW YORK, NY  
WEST SIDE OF MADISON AVENUE BETWEEN E 118TH ST AND E 119TH ST

GROUND FLOOR

East 118th Street



Madison Avenue



New Street Realty Advisors, LLC

419 Park Avenue South, Suite 809, New York, NY 10016

Joshua Gettler

212.251.0627

jgettler@newstreetra.com

Matthew Gorman

212.251.0626

mgorman@newstreetra.com

The information is from sources deemed reliable, however, we have not verified its accuracy, and make no representation about it. It is submitted subject to the possibility of errors, omissions, change of price, rental or other conditions, prior sale, lease or financing, or withdrawal without notice.

